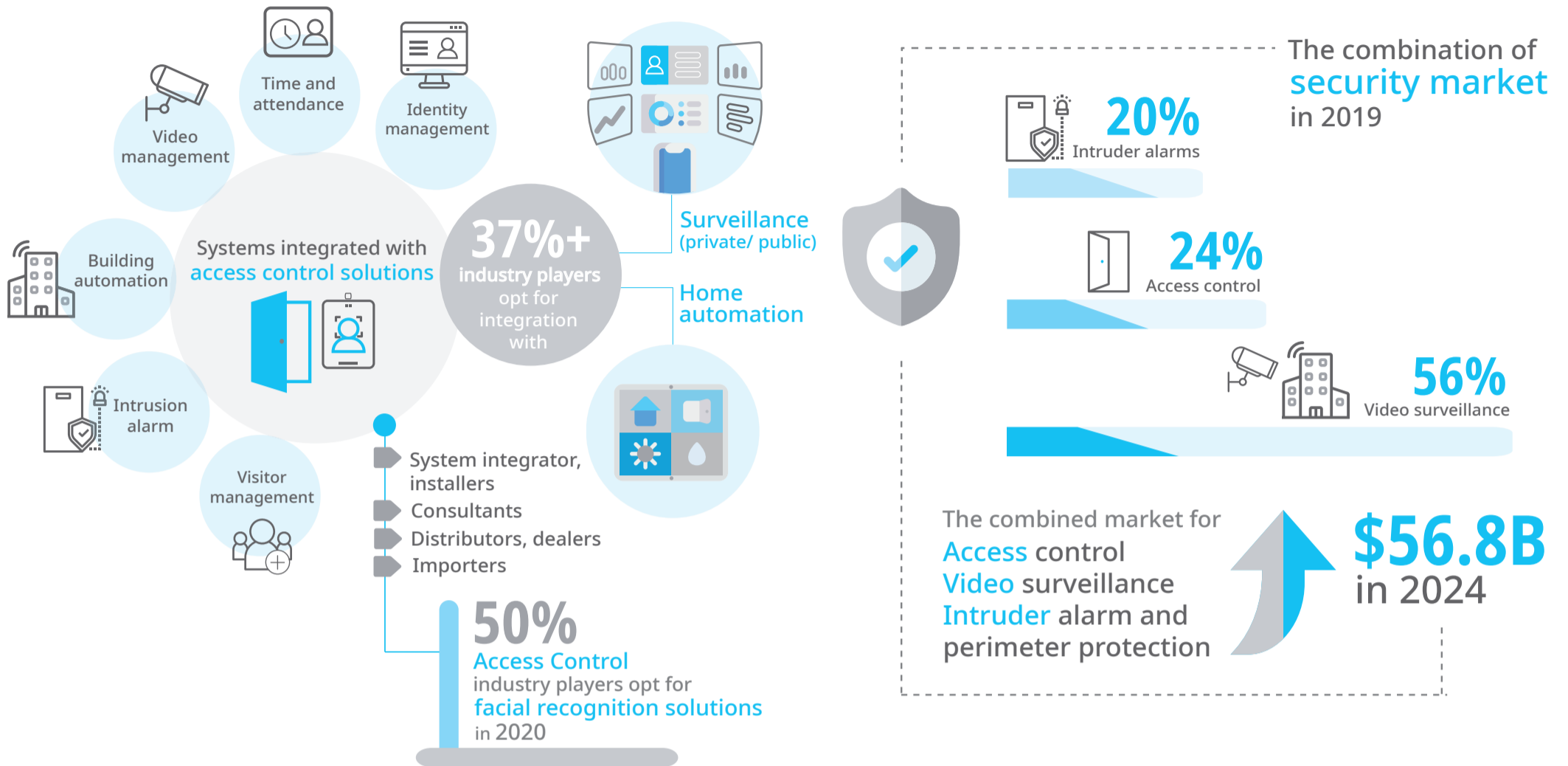


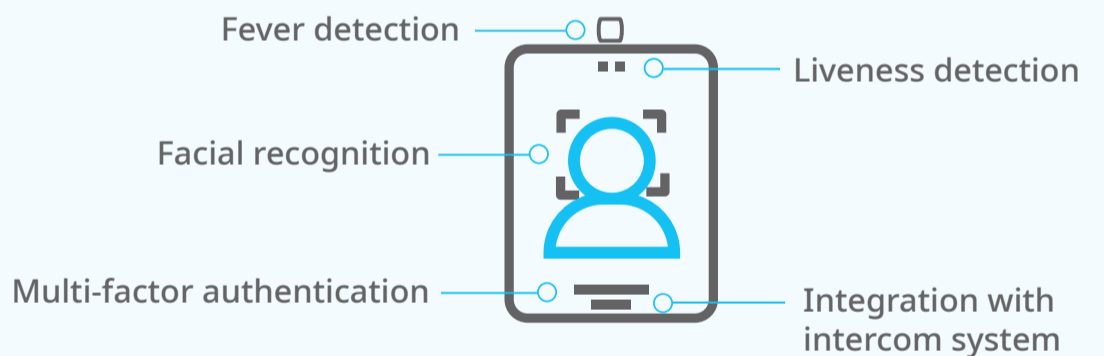
# Facial Recognition in Access Control

## Main integration requirements from security industry players

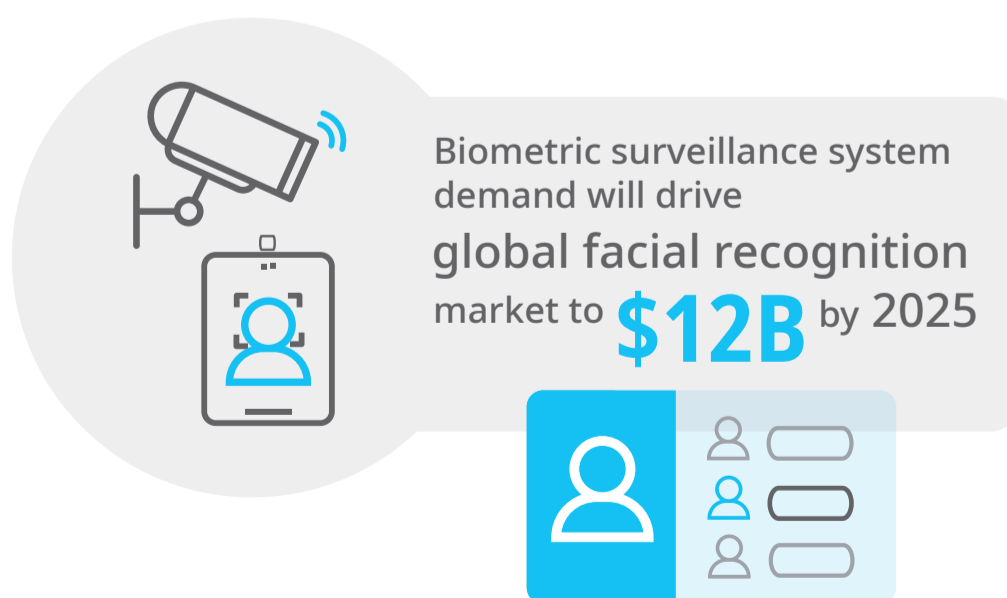


### ScanViS GateGuard Series for access control to enhance private security

- ✓ ID verification
- ✓ Control access right
- ✓ Automate attendance recording
- ✓ Real-time monitoring



## Market drivers for enhanced security in enterprise access management



**70%** of businesses will use attribute-based access control (ABAC)\* to protect critical assets.

- Employees
- Partners
- Contractors
- Distributors
- Consultants
- Customers
- Suppliers

All these user groups need access to **enterprise systems.**

\*Attribute-based access control  
It is a model based on a central policy that defines which combinations of user and object attributes are required to perform any action in a system.

